



INDOFINE Chemical Company, Inc.

121 Stryker Lane, Bldg. 30, Suite 1 • Hillsborough, NJ 08844 • U.S.A.

Phone: (908) 359-6778 • FAX: (908) 359-1179

website: www.indofinechemical.com

e-mail: chemical@indofinechemical.com

CERTIFICATE OF ANALYSIS

Cat No.: 19-045

Product: **6-METHOXY-4-METHYLCOUMARIN**

CAS Number: [6295-35-8]

Lot Number: 99159

Chemical Formula: C₁₁H₁₀O₃

Molecular Weight: 190.20

Melting Point: 163-165°C

Appearance: White crystalline powder

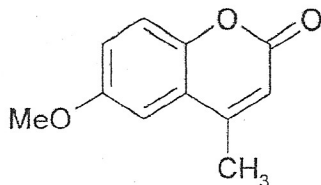
TLC: Hexane:Ethyl acetate (7:3)

Solubility: Soluble in Chloroform

NMR Spectrum: Enclosed

Purity(HPLC): 99.74%

Storage: Cool dry place





INDOFINE Chemical Company, Inc.

121 Stryker Lane, Bldg. 30, Suite 1 • Hillsborough, NJ 08844 • U.S.A.

Phone: (908) 359-6778 • FAX: (908) 359-1179

website: www.indofinechemical.com

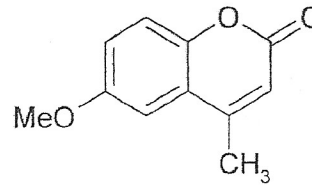
e-mail: chemical@indofinechemical.com

HPLC ANALYSIS

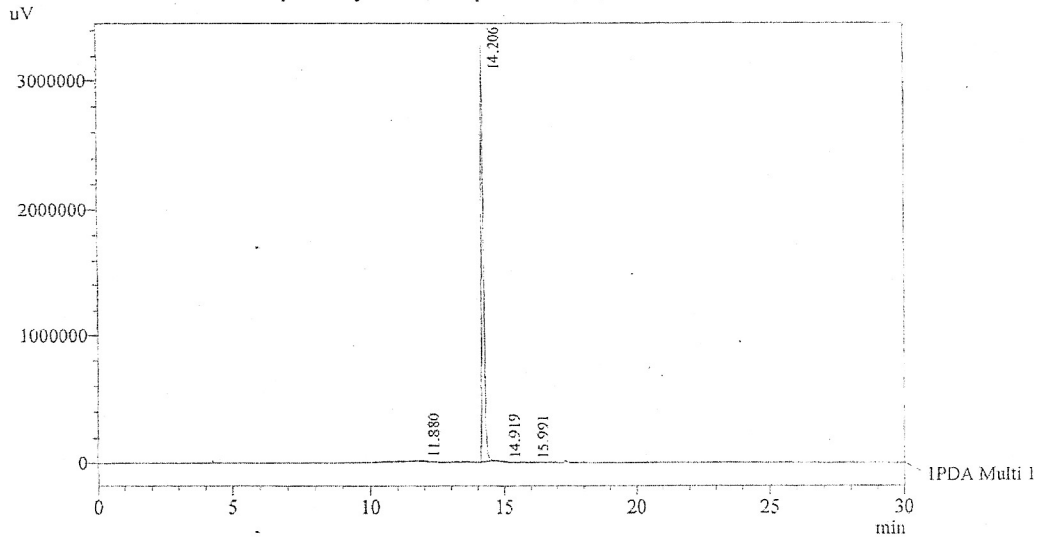
Acquired by : Sanjeev
 Sample Name : 6-Methoxy-4-methylcoumarin
 Sample ID : Lot No:-99159
 Injection Volume : 20 uL
 Data Filename : 060412D.lcd
 Method Filename : Linear Gradient.M.lcm

Catalog no.: 19-045
 Product name: 6-Methoxy-4-methylcoumarin
 Lot No.: 99159

Column : LUNA C-18(2), (250mm x4.6mm 5.0μ)
 Flow : 1.000 mL/min.
 Mobile Phase : A(0.05% TFA in water) B(Acetonitrile)
 0.01 90 10
 12.0 10 90
 20.0 10 90
 23.0 90 10
 30.0 90 10



Chromatogram
 6-Methoxy-4-methylcoumarin D:\promonence\Data\2012\APR-2012\060412D.lcd



1 PDA Multi 1 / 254nm 4nm

PeakTable

Peak#	Name	Ret. Time	Area	Area %	Relative Retention Time
1	RT:11.880	11.880	29341	0.15	0.84
2	RT:14.206	14.206	19570985	99.74	1.00
3	RT:14.919	14.919	8799	0.04	1.05
4	RT:15.991	15.991	13721	0.07	1.13
Total			19622845	100.00	



INDOFINE Chemical Company, Inc.

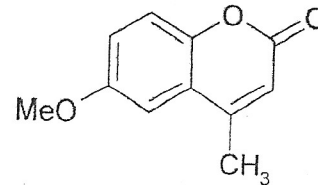
121 Stryker Lane, Bldg. 30, Suite 1 • Hillsborough, NJ 08844 • U.S.A.

Phone: (908) 359-6778 • FAX: (908) 359-1179

website: www.indofinechemical.com

e-mail: chemical@indofinechemical.com

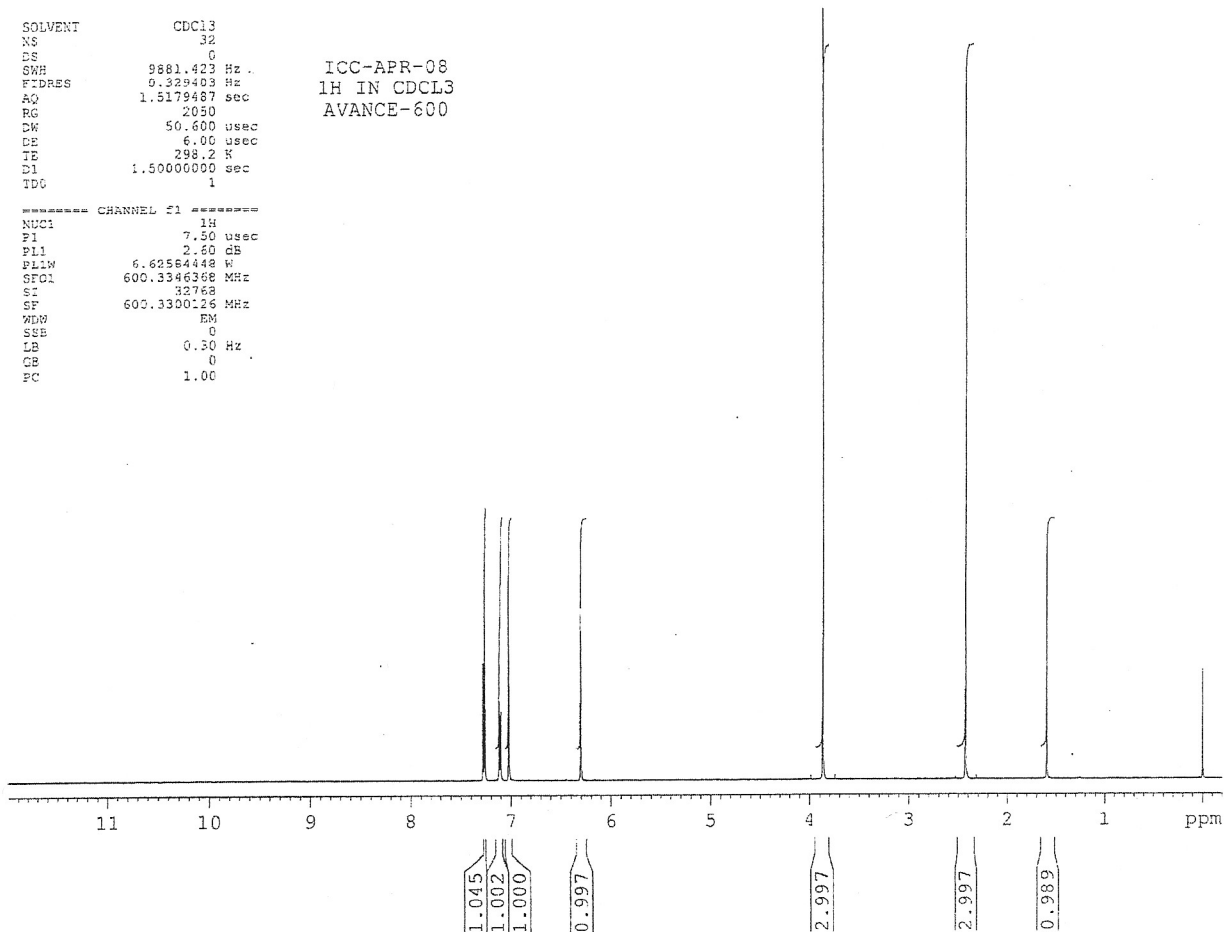
Catalog no.: 19-045
Product name: 6-Methoxy-4-methylcoumarin
Lot No.: 99159



SOLVENT CDCl3
NS 32
DS 0
SWH 9881.423 Hz
FIDRES 0.323403 Hz
AQ 1.5179487 sec
RG 2050
DK 50.600 usec
DE 6.00 usec
TE 298.2 K
D1 1.50000000 sec
TDC 1

ICC-APR-08
1H IN CDCL3
AVANCE-600

----- CHANNEL f1 -----
NUC1 1H
P1 7.50 usec
PL1 2.60 dB
PL1W 6.62564444 W
SFO1 600.3346368 MHz
SI 32768
SF 600.3300128 MHz
MEM EM
SSE 0
LB 0.30 Hz
GB 0
PC 1.00





INDOFINE Chemical Company, Inc.

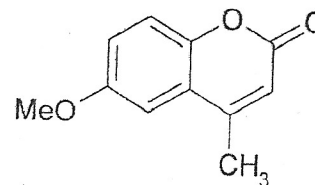
121 Stryker Lane, Bldg. 30, Suite 1 • Hillsborough, NJ 08844 • U.S.A.

Phone: (908) 359-6778 • FAX: (908) 359-1179

website: www.indofinechemical.com

e-mail: chemical@indofinechemical.com

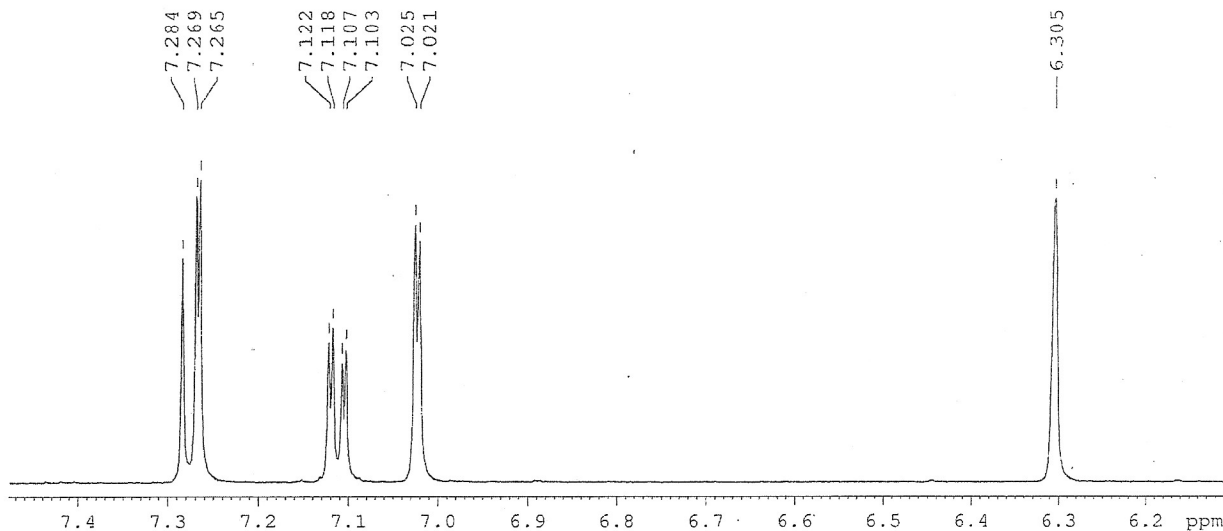
Catalog no.: 19-045
Product name: 6-Methoxy-4-methylcoumarin
Lot No.: 99159



```
SOLVENT      CDCl3
NS           32
DS           0
SMH          9891.423 Hz
FIDRES       0.329403 Hz
AQ           1.5179487 sec
RG           2056
DK           50.600 usec
DE           6.00 usec
TE           298.2 K
DI           1.50000000 sec
TDC          1
```

ICC-APR-08
1H IN CDCL3
AVANCE-600

```
----- CHANNEL f1 -----
NUC1         1H
P1           7.50 usec
PL1          2.60 dB
PL1W         6.6258444E W
SFO1         600.3346368 MHz
SF           32768
SF           600.3300126 MHz
WDW          EM
SSB          0
LE           0.30 Hz
GB           0
PC           1.00
```





INDOFINE Chemical Company, Inc.

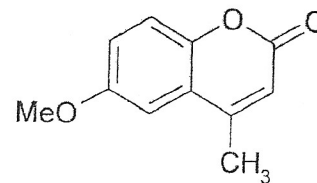
121 Stryker Lane, Bldg. 30, Suite 1 • Hillsborough, NJ 08844 • U.S.A.

Phone: (908) 359-6778 • FAX: (908) 359-1179

website: www.indofinechemical.com

e-mail: chemical@indofinechemical.com

Catalog no.: 19-045
Product name: 6-Methoxy-4-methylcoumarin
Lot No.: 99159



SOLVENT CDCl3
NS 32
DS 0
SWH 9981.423 Hz
FIDRES 0.329403 Hz
AQ 1.5179487 sec
RG 2050
DW 50.600 usec
DE 6.00 usec
TE 298.2 K
D1 1.5000000 sec
TDO 1

ICC-APR-08
1H IN CDCl3
AVANCE-600

==== CHANNEL f1 =====
NUC1 1H
P1 7.50 usec
PL1 2.60 dB
PL1W 6.62586448 W
SFO1 600.3346268 MHz
SI 12768
SF 600.3300126 MHz
WDW EM
SSB 0
LB 0.30 Hz
GB 0
PC 1.00

